



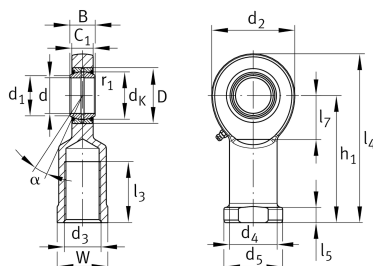
GIR25-DO-2RS

Rod end

Schaeffler ID:
0066355120000

Rod end with internal thread, right hand thread, requiring maintenance, sliding contact surface: steel/steel, DIN ISO 12240-4, dimension series E, type F, sealed

Technical information



Main Dimensions & Performance Data

d	25 mm	Bore diameter bearing
D	42 mm	Outside diameter bearing
B	20 mm	Width inner ring
C_r	48,300 N	Basic dynamic load rating, radial
C_{0r}	88,300 N	Basic static load rating, radial
G_r	0,037 - 0,1 mm	Radial Clearance
	0.66 kg	Weight

Dimensions

d_K	35.5 mm	Ball diameter
d_1	29.3 mm	Outer flange diameter inner ring
d_2	64 mm	Outer eye diameter
d_3	M24x2	Thread size
d_4	33.5 mm	Shank diameter
h_1	94 mm	Shank Length Internal thread head
α	7 °	Tilt angle
l_3	48 mm	Thread length Internal thread
l_4	126 mm	Total length internal thread head
l_5	12 mm	length rod end shank
l_7	32 mm	Distance drilling with/shaft start
d_5	42 mm	Shank diameter, large
C_1	17 mm	Width of the rod end
r_{1smin}	0.6 mm	Edge Spacing
W	36 mm	Width Across Flat
d_{OT}	0 mm	Bore diameter bearing, upper tolerance
d_{UT}	-0.01 mm	Bore diameter bearing, lower tolerance
B_{OT}	0 mm	Width inner ring, upper tolerance
B_{UT}	-0.12 mm	Width inner ring, lower tolerance

Temperature range

T _{min}	-30 °C	Operating temperature min.
T _{max}	130 °C	Operating temperature max.